

# SNAP ACTION SWITCH

## Features

- High precision basic switch in a variety of styles.
- Wide margins of operating conditions increase the operating speed range.
- Available in general purpose.



## Specifications

Item	Standard
Rating	20(4)A 250VAC (EN 61058-1) 15A 125VAC or 250VAC (UL 1054) 1/2A 125VDC 1/4A 250VDC 1/8HP 125VAC 1/4HP 250VAC
Contact Resistance	15mΩ max. (initial)
Insulation Resistance	100MΩ min.( at 500V DC)
Dielectric Strength	Between terminals of same polarity AC 1000V (50/60Hz for 1minute)
Electrically Life	100,000 operations min.
Mechanically Life	1,000,000 operations min.

## Product Selection

Z15G   
1

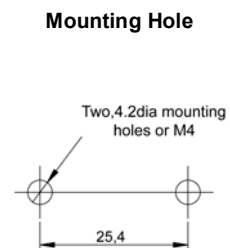
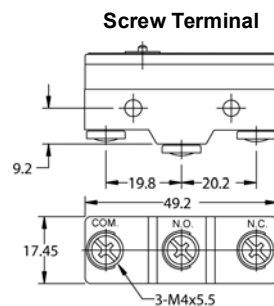
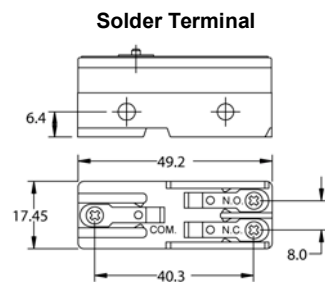
### 1.SOLDER ACTUATOR TYPES

- 1501:Hinge lever
- 1502:Short Hinge lever
- 1503:Hinge roller lever
- 1504:Short hinge roller lever
- 1544:Unidirectional short hinge roller lever

### 2.SCREW ACTUATOR TYPES

- 1701:Hinge lever
- 1702:Short Hinge lever
- 1703:Hinge roller lever
- 1704:Short hinge roller lever
- 1744:Unidirectional short hinge roller lever

## Terminals



B5

Design, specifications are subject to change without notice.

# SNAP ACTION SWITCH

## Operating Characteristics

Unit :mm

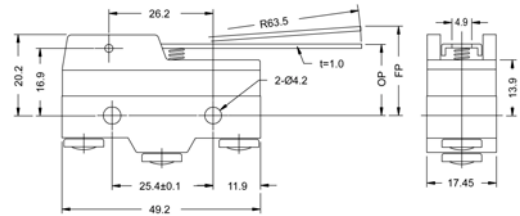
Item NO.

Dimensions

### Z15G1701



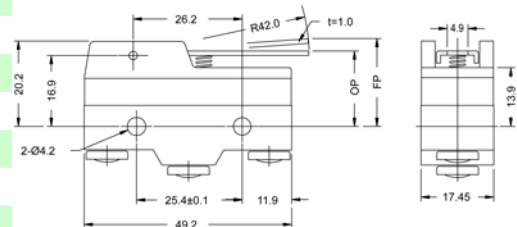
<u>Terminal</u>	Item No.
Solder	Z15G1501
<u>Screw</u>	Z15G1701
OF max.	70g
RF min.	14g
PT max.	10mm*
OT min.	5.6mm
MD max.	1.27mm
FP max.	28.2mm
OP	19±0.8mm



### Z15G1702



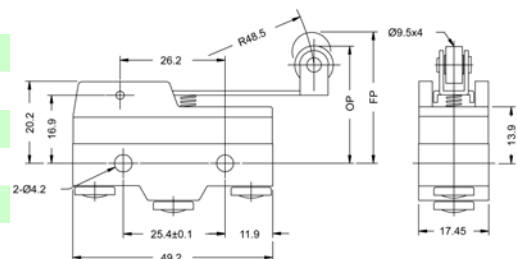
<u>Terminal</u>	Item No.
Solder	Z15G1502
<u>Screw</u>	Z15G1702
OF max.	90g
RF min.	18g
PT max.	8mm
OT min.	4.2mm
MD max.	1mm
	26.2mm
OP	19.8±0.8mm



### Z15G1703



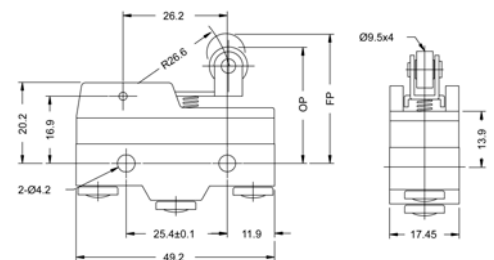
<u>Terminal</u>	Item No.
Solder	Z15G1503
<u>Screw</u>	Z15G1703
OF max.	100g
RF min.	22g
PT max.	7.1mm
OT min.	4mm
MD max.	1.02mm
FP max.	32.5mm
OP	30.2±0.4mm



### Z15G1704



<u>Terminal</u>	Item No.
Solder	Z15G1504
<u>Screw</u>	Z15G1704
OF max.	160g
RF min.	42g
PT max.	2.7mm
OT min.	2.4mm
MD max.	0.5mm
FP max.	32.5mm
OP	30.2±0.4mm



**HIGHLY**

B6

Design, specifications are subject to change without notice.

# SNAP ACTION SWITCH

## Operating Characteristics

Unit :mm\_

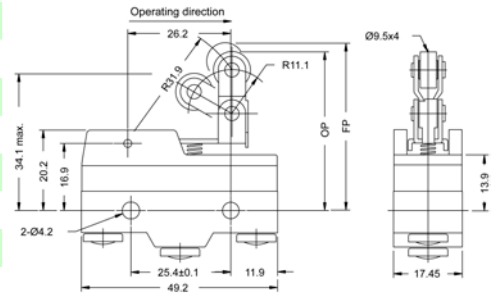
Item NO.

Dimensions

Z15G1744



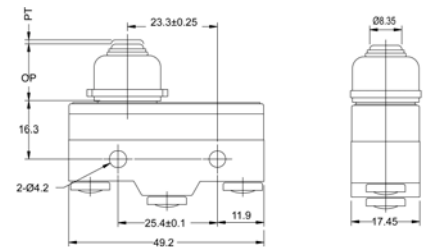
Terminal	Item No.
Solder	Z15G1544
Screw	Z15G1744
OF max.	170g
RF min.	42g
PT max.	2.7mm*
OT min.	2.4mm
MD max.	0.51mm
FP max.	43.6mm
OP	41.3±0.8mm



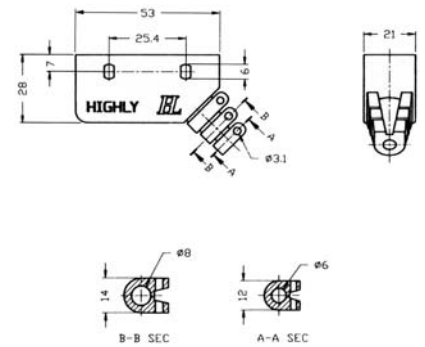
ZP15G1306



Terminal	Item No.
Solder	ZP15G1106
Screw	ZP15G1306
OF max.	540g
RF min.	114g
PT max.	2.3mm
OT min.	1.6mm
MD max.	0.06mm
OP	28.2±0.5mm



## TERMINAL ENCLOSURES AA8000



**HIGHLY**

B7

Design, specifications are subject to change without notice.